



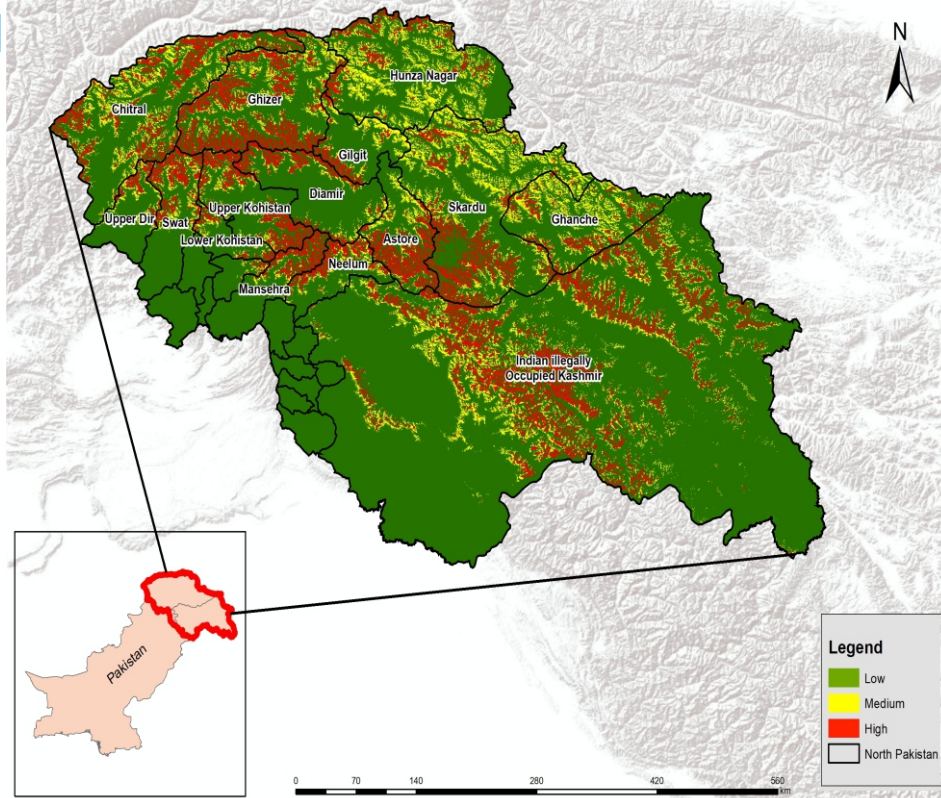
# AVALANCHE ADVISORY

January, 2025 to April, 2025

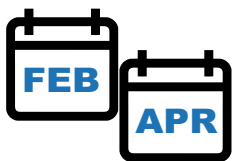


## PROJECTION

- As per NEOC seasonal projections, rain and snow are expected in the upper regions of Khyber Pukhtunkhwa, Gilgit Baltistan, and Azad Jammu & Kashmir in January, February and March. Cold weather conditions are anticipated, with snow occurring over the higher altitudes. However the above normal temperatures are expected.
- Snow accumulation with above normal temperatures may lead to higher number of avalanches in high risk areas shown in map.
- As heavy to moderate snowfall may persist for some days, localized avalanches are expected to occur in moderate to high risk zones.



## BE PREPARED FOR AVALANCHE



Peak season is February through April



That last Several Days

## LIKELY IMPACTS OF AVALANCHE



Road Closures



Destroy Vegetation



Structural Damage



Human casualties

## LIKELY EXPOSED AREAS

**KHYBER PAKHTUNKHWA**

Upper Kohistan  
Lower Kohistan

Swat  
Upper Dir

Batagram  
Mansehra

Chitral

**AZAD JAMMU & KASHMIR**

Neelum

**GILGIT BALTISTAN**

Hunza Nagar  
Skardu

Astore  
Gilgit

Diamir  
Ghizer

Ghanche

## IMMEDIATE ACTION

- It is advised to be watchful of weather forecasts and snow conditions regularly.
- Evacuate people from high-risk zones before an avalanche occurs.
- PDMA's, Rescue Services, Armed Forces and leading NGOs / CSOs to ensure availability of personnel / equipment in the indicated areas and be on stand-by for rapid response in case of any forecasted adverse weather systems.
- Stay updated on weather conditions through social media and local news.

