

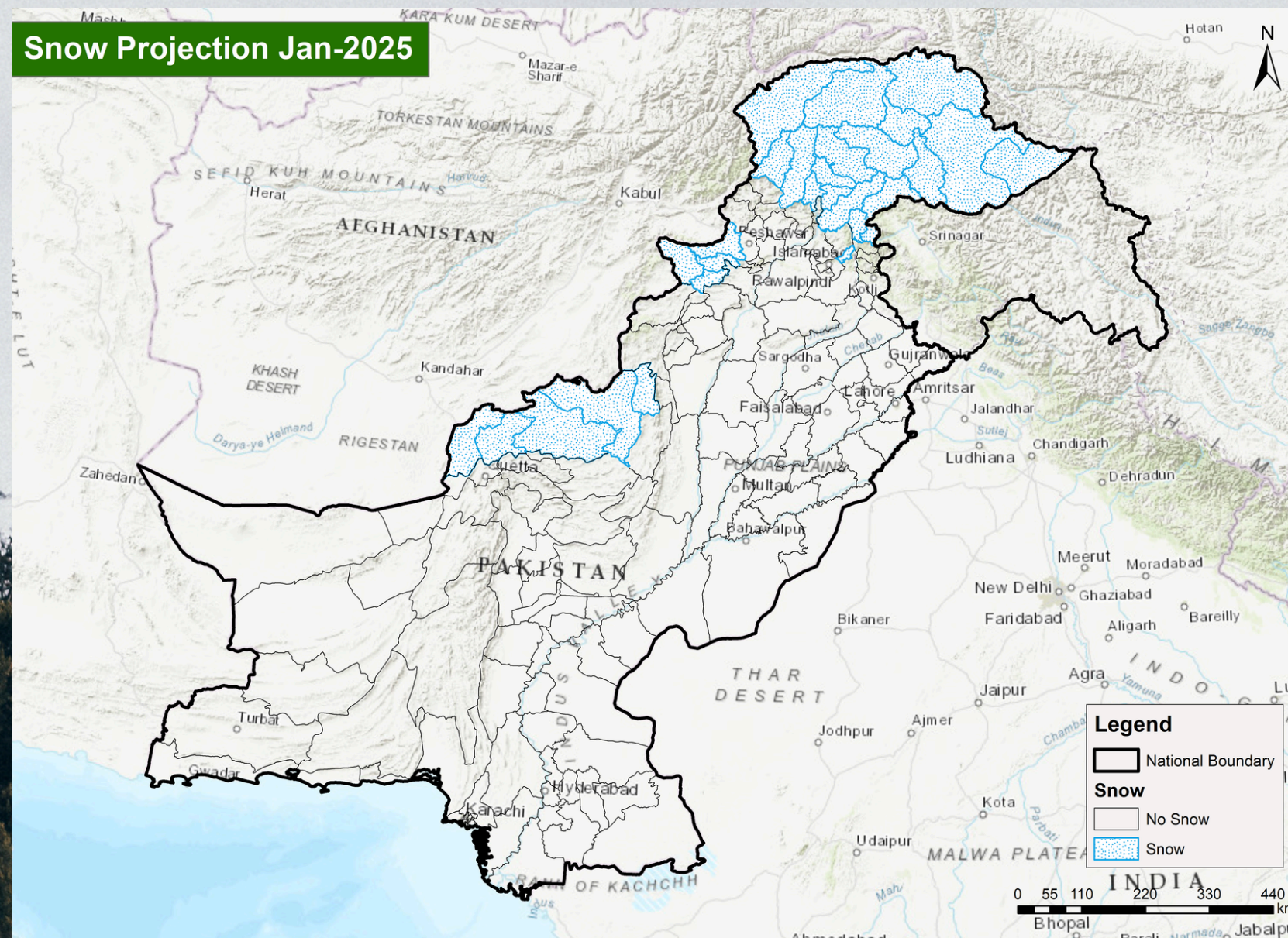


SNOWFALL PROJECTION (January, 2025)



NATIONAL EMERGENCY OPERATIONS CENTER - NATIONAL DISASTER MANAGEMENT AUTHORITY

Snow Projection Jan-2025



- Continuation of the negative phase of the El Niño Southern Oscillation (ENSO) and the neutral phase of the Indian Ocean Dipole (IOD) is expected.
- Rain and thunderstorms, accompanied by isolated snowfall in hilly areas, are expected in Khyber Pakhtunkhwa, Gilgit-Baltistan, Galliyat region and Azad Jammu & Kashmir. Near-normal snowfall is anticipated during January.

Impacts

- Travel disruptions due to road closures may occur in affected areas.
- Severe weather conditions in high-altitude areas may pose health risks.
- Power outages may impact the community.
- Supply chain interruptions may limit access to essentials like food and medical supplies.

Precautionary Measures

- Avoid unnecessary travel during the snowfall period.
- Stay updated on weather and road conditions through official channels of authorities.
- Use caution while driving, and equip your vehicle with snow chains, if necessary.
- Dress warmly in layers and cover exposed skin to protect against the cold.